



Together, we will RISE

Special Educational Needs Information Report

Date of Policy: May 2026

Date of Review: July 2027

Introduction

At our school, we are committed to providing an inclusive environment where every child is supported to achieve their full potential. We aim to ensure that pupils with Special Educational Needs and Disabilities (SEND) receive appropriate support and equal opportunities in all aspects of school life.

SEN Provision (further information can be found in the SEN Policy)

The school provides support for students with a range of needs, including:

- Communication and interaction difficulties
- Cognition and learning needs
- Social, emotional, and mental health needs
- Sensory and physical needs

Support may include:

- Individual learning plans
- Small group interventions
- In-class support
- Specialist resources and teaching strategies
- Access to external professional services

SENCO Information

The Special Educational Needs Coordinator (SENCO) works closely with teachers, parents, and external agencies to monitor progress and provide suitable support for students with SEND.

SENCO Contact Details:

Name: Charlie McKenna (Maternity)

Email: senco@kempsford.gloucs.sch.uk

Phone: 01285 810367

Identification and Assessment

Students are identified through:

- Teacher observations
- Progress monitoring
- Parent concerns
- External assessments and professional recommendations

Regular reviews are carried out to assess progress and update support plans where necessary.

Working with Parents and Carers

We believe strong communication with families is essential. Parents and carers are involved in:

- Review meetings
- Support planning
- Progress discussions
- Decision-making regarding interventions

Accessibility

The school aims to provide an accessible learning environment for all students through:

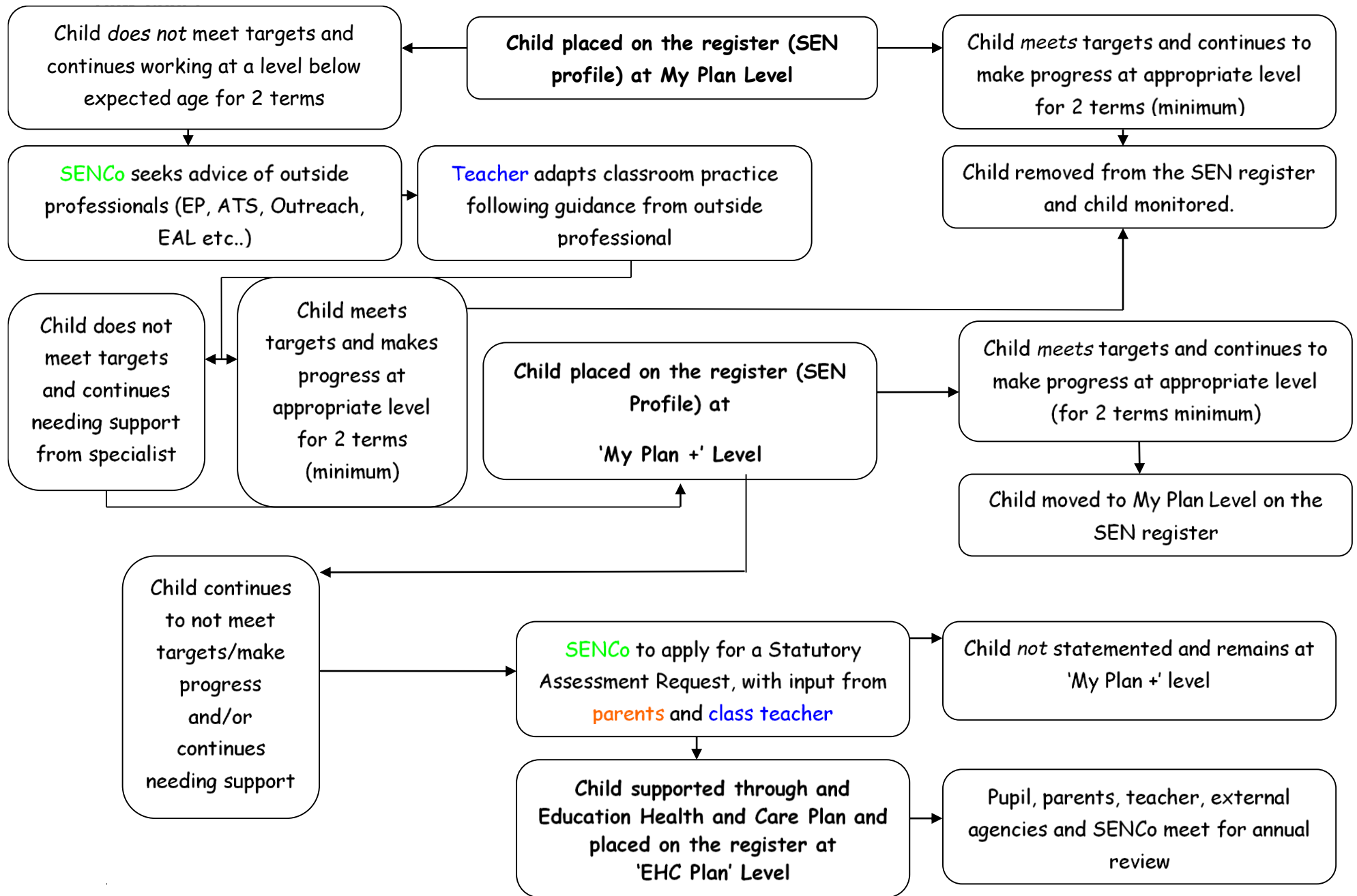
- Differentiated teaching approaches
- Accessible facilities and resources
- Supportive classroom environments

External Support Services

The school works with a range of outside agencies including:

- Educational psychologists (Tracey Coxen is currently allocated to the school)
- Speech and language therapists
- Health and social care professionals
- Local authority SEND services

Our school remains committed to ensuring all students feel valued, supported, and able to participate fully in school life. We continually review and improve our SEN provision to meet the needs of every learner.



Transition report on Needs and Concerns

Date completed: SEN Yes/No

Name:

Date of Birth:

Year Group:

Class:

Teacher:

TA:

Area of Learning	Concerns	Evidence to Support May include data/observations etc
Cognition and Learning English		
Maths		
Communication and Interaction (includes speech and language)		
Social, Emotional and Mental Health		

